

# 5/2 Directional control valves

Nominal size 7 and 12

Solenoid pilot operated

Spool with pressure energized soft seals

Port size G 1/4 up G1/2

Operating pressure: 10 bar max. (see parameters)



## Description (standard unit)

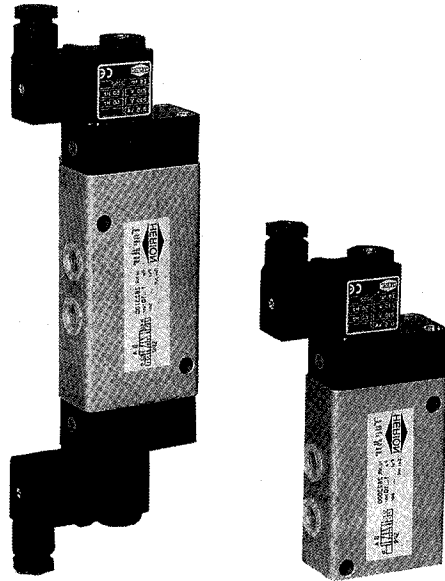
solenoid valve for filtered, lubricated <sup>1)</sup> or non-lubricated air

Flow direction: Determined

Temperature range: -10 to +60 °C

## Features

- Integrated sound absorption eliminating objectionable air noise
- Straight thru flow paths assuring high flow rates and fast response time
- Simple, compact yet most efficient design thanks to T-ring system
- Maintenance-free
- Easy to service
- Uncomplicated and fast replacement of solenoids
- Compact design
- standard manual override



## Parameters

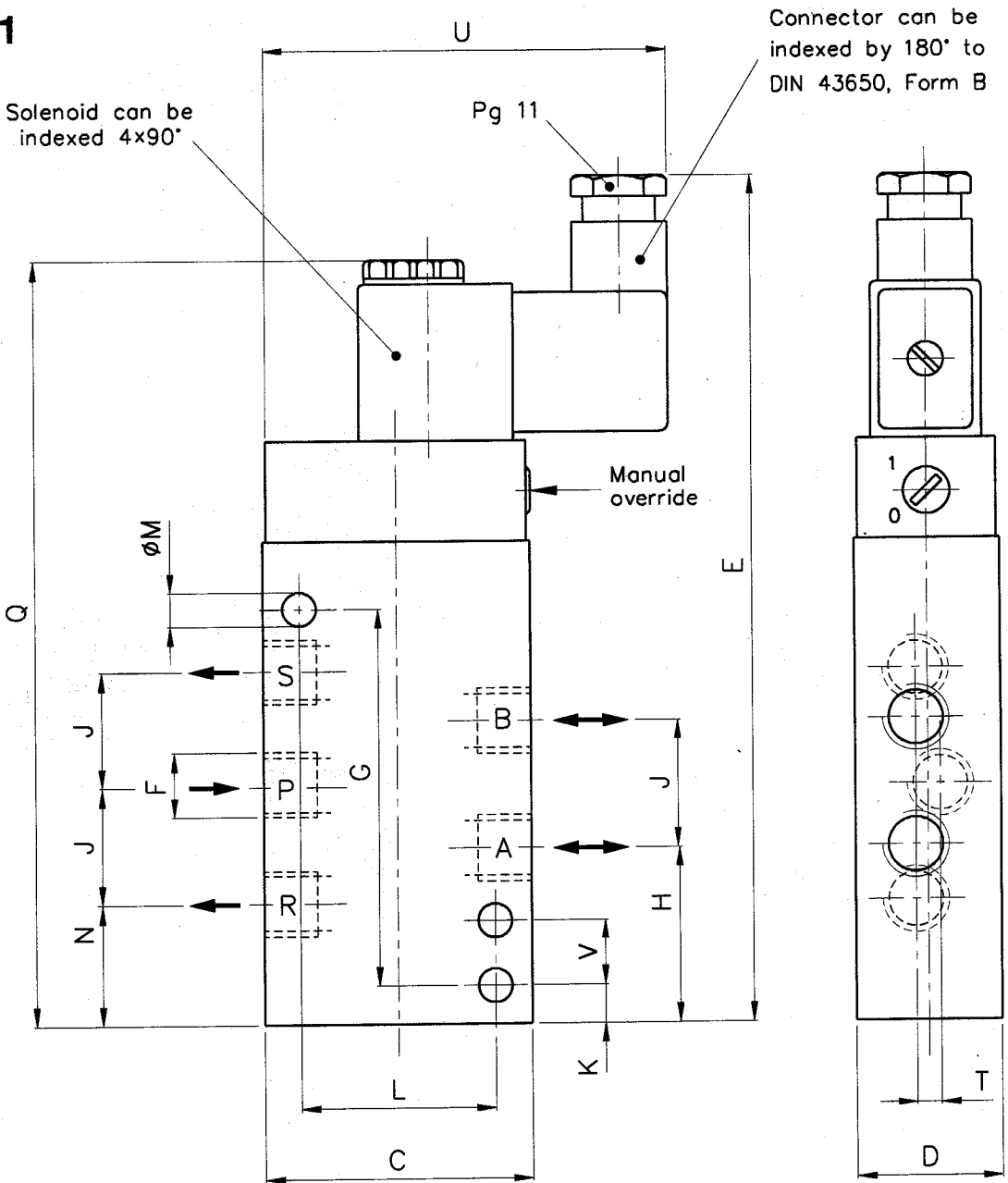
Symbols	Nominal size	Port size	Operating pressure [bar]		Flow rate QN l/min	Switching time approx. [ms]	Weight [kg]	Dimensional drawing No.	Cat. No.	
			min	max					Valve	solenoid
	<b>Power consumption 5 watt (6 VA)</b>									
	7	G 1/4	1	10	1200	20	0.55	01	2623000 <sup>2)</sup>	See solenoid table
	12	G 1/2	1	10	3000	25	0.83	01	2623500 <sup>2)</sup>	See solenoid table
	<b>Power consumption 5 watt (6 VA)</b>									
	7	G 1/4	1	10	1200	15	0.90	02	2623100	See solenoid table
	12	G 1/2	1	10	3000	20	1.30	02	2623600	See solenoid table
	<b>Power consumption ≤ 2 watt</b>									
	7	G 1/4	1	8	1200	20	0.55	01	2623001 <sup>2)</sup>	See solenoid table
	12	G 1/2	1	8	3000	25	0.83	01	2623501 <sup>2)</sup>	See solenoid table
	<b>Power consumption ≤ 2 watt</b>									
	7	G 1/4	1	8	1200	15	0.90	02	2623101	See solenoid table
	12	G 1/2	1	8	3000	20	1.30	02	2623601	See solenoid table

1) Oil recommendation: Shell Hydrol DO 32, ESSO Febis K32 (as of July 1992) or comparable oils with DVI values < 8 (DIN 53521) and ISO viscosity class 32-46 (DIN 51519).

2) Port R not throttleable

# Dimensional drawing

01

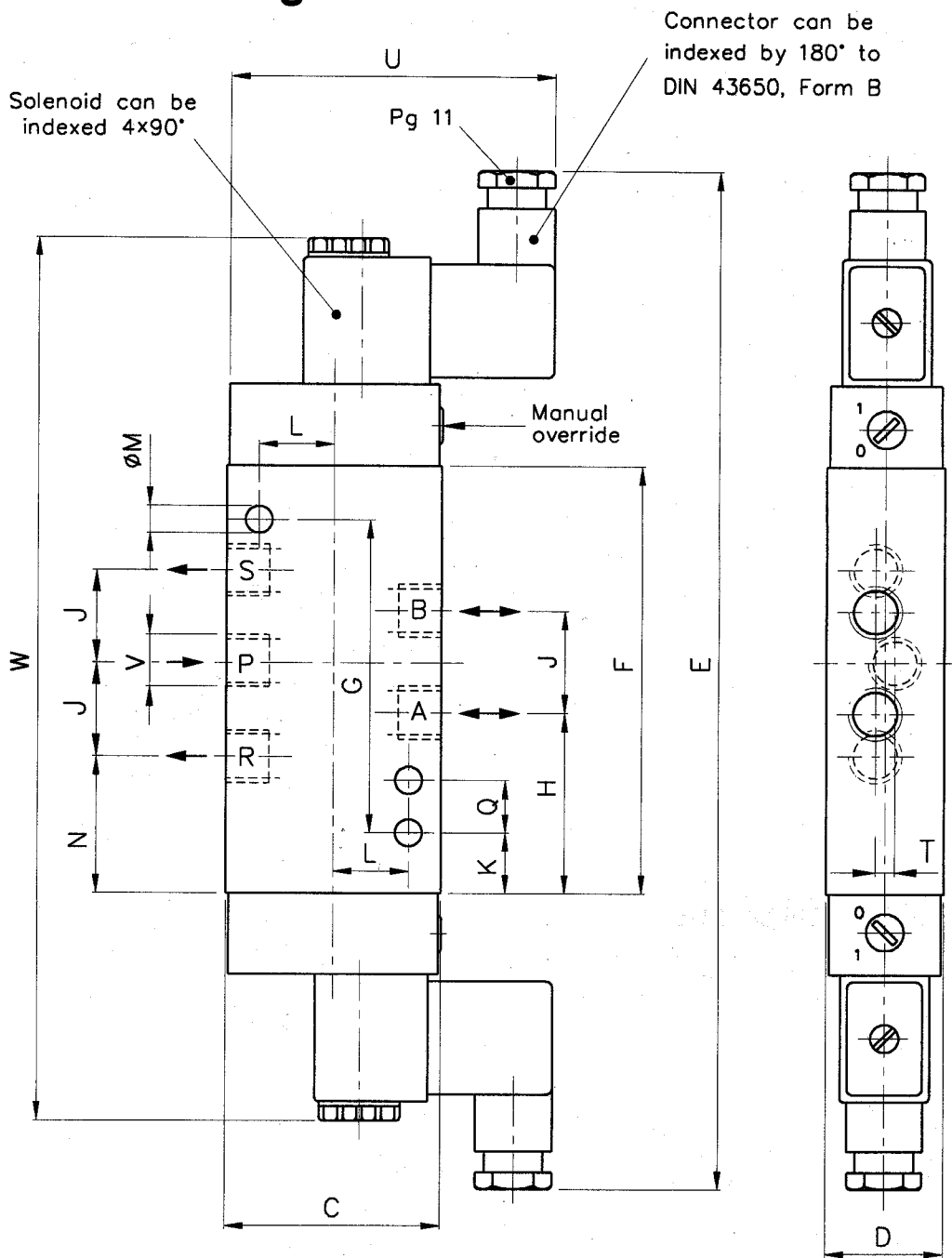


Dimension Table (mm)

Cat. No.	C	D	E	F	G	H	J	K	L	M	N	Q	T	U	V
2623000	55	30	157.0	G1/4	67	23.0	24	5	40	7	11	136.5	5	~83	—
2623001	55	30	157.0	G1/4	67	23.0	24	5	40	7	11	136.5	5	~83	—
2623500	65	35	189.5	G1/2	60	46.3	33	16	46	7	26.5	168.0	—	~83	14
2623501	66	36	189.5	G1/2	60	46.3	33	16	46	7	26.5	168.0	—	~83	14

# Dimensional drawing

02



**Dimension Table (mm)**

Cat. No.	C	D	E	F	G	H	J	K	L	M	N	Q	T	U	V	W
<b>2623100</b>	55	30	251	102	88	39	24	21	20	7	27	—	5	~83	G1/4	209
<b>2623101</b>	55	30	251	102	88	39	24	21	20	7	27	—	5	~83	G1/4	209
<b>2623600</b>	65	35	260	111	60	42.3	33	12	23	7	22.5	14	—	~83	G1/2	218
<b>2623601</b>	66	35	260	111	60	42.3	33	12	23	7	22.5	14	—	~83	G1/2	218